

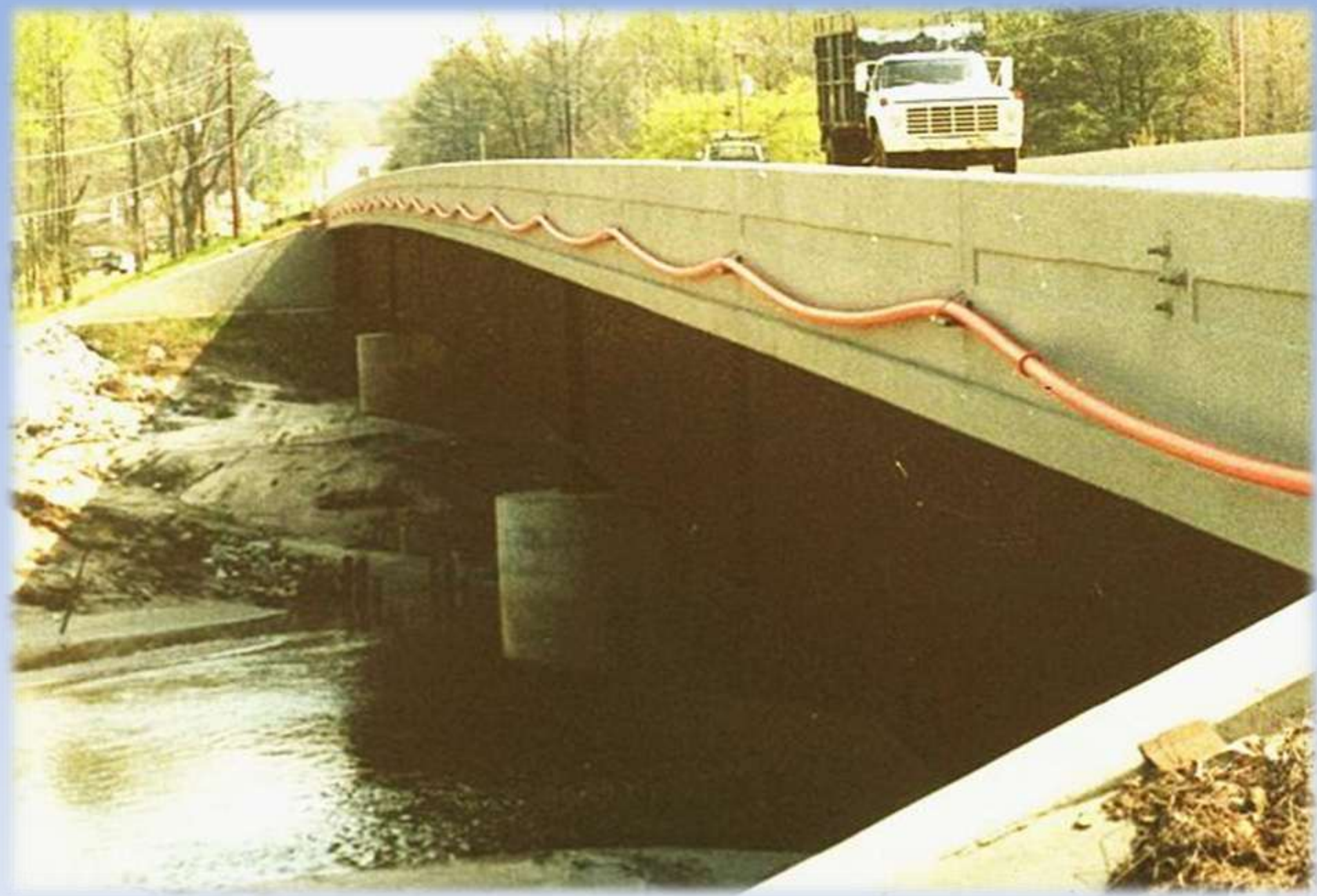
What's Wrong With This Picture?









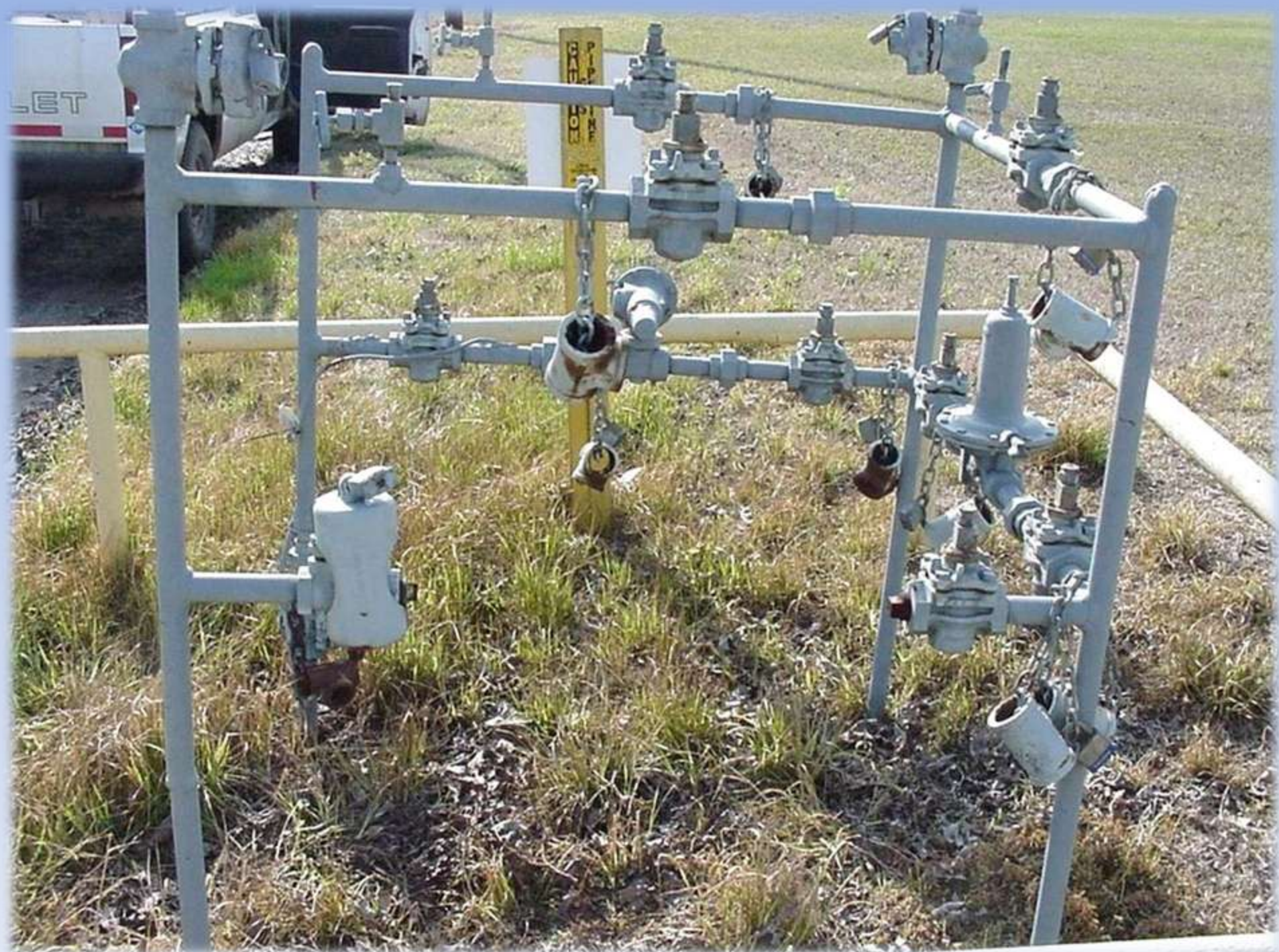


































DPR 9 2012







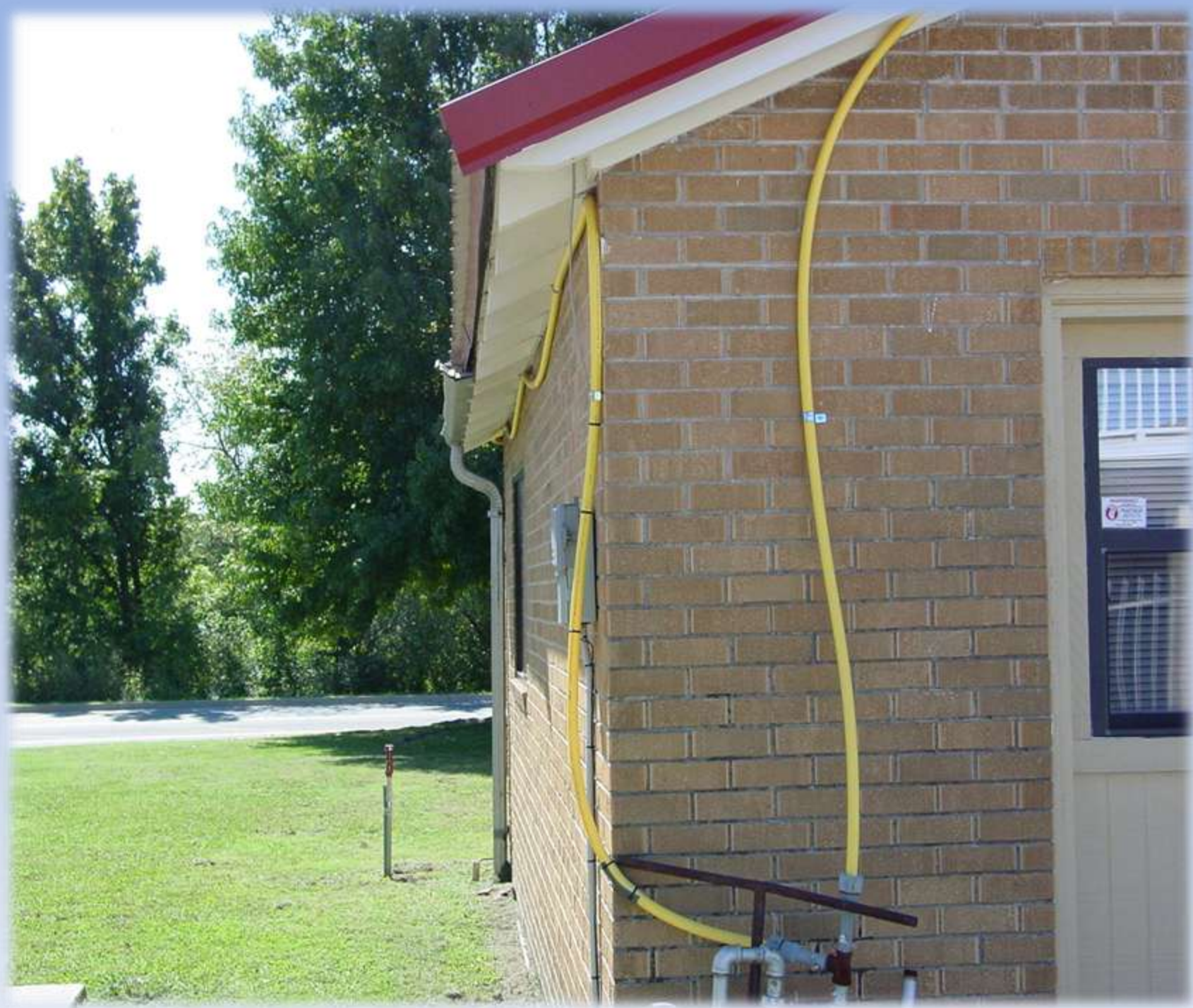


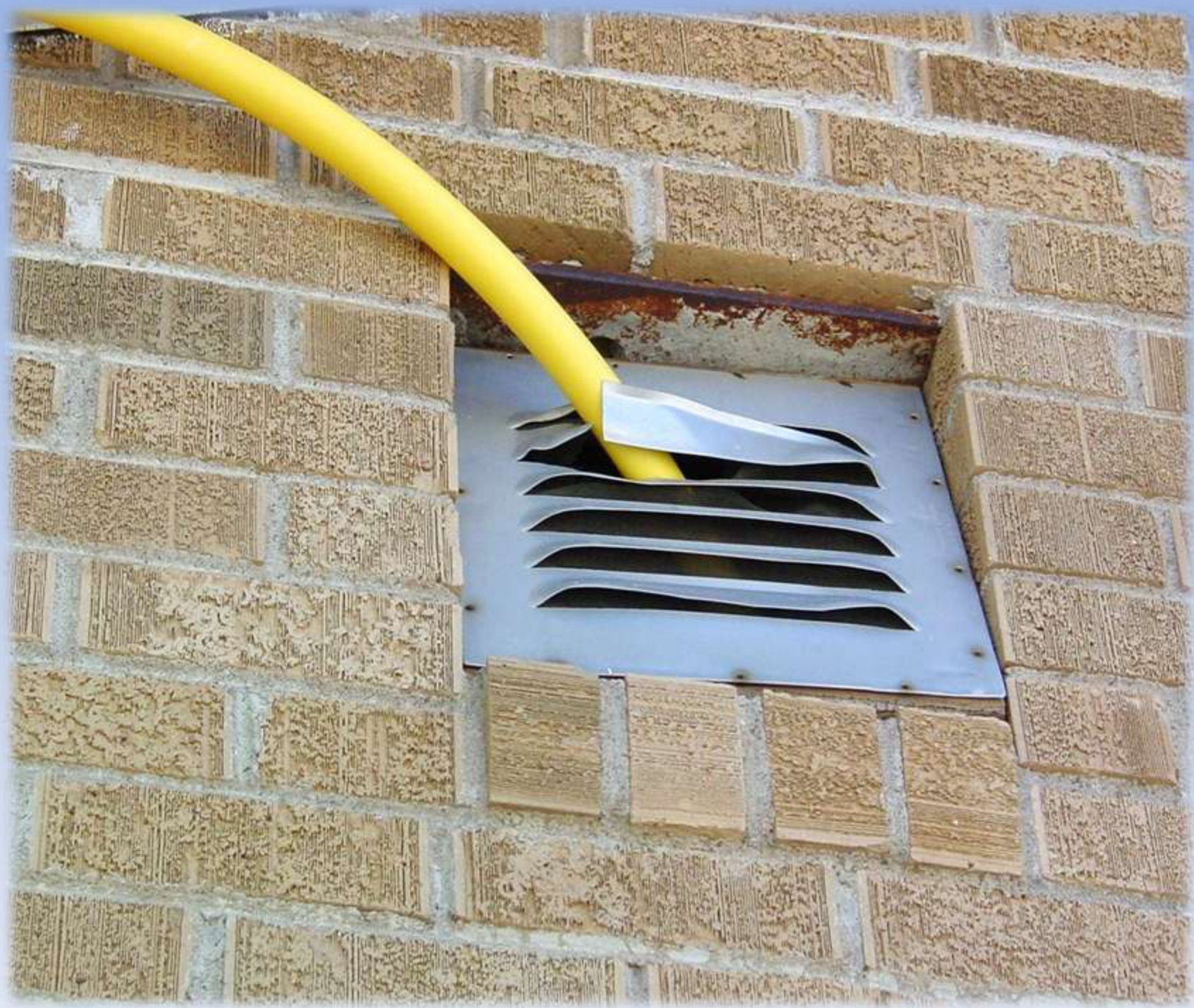


















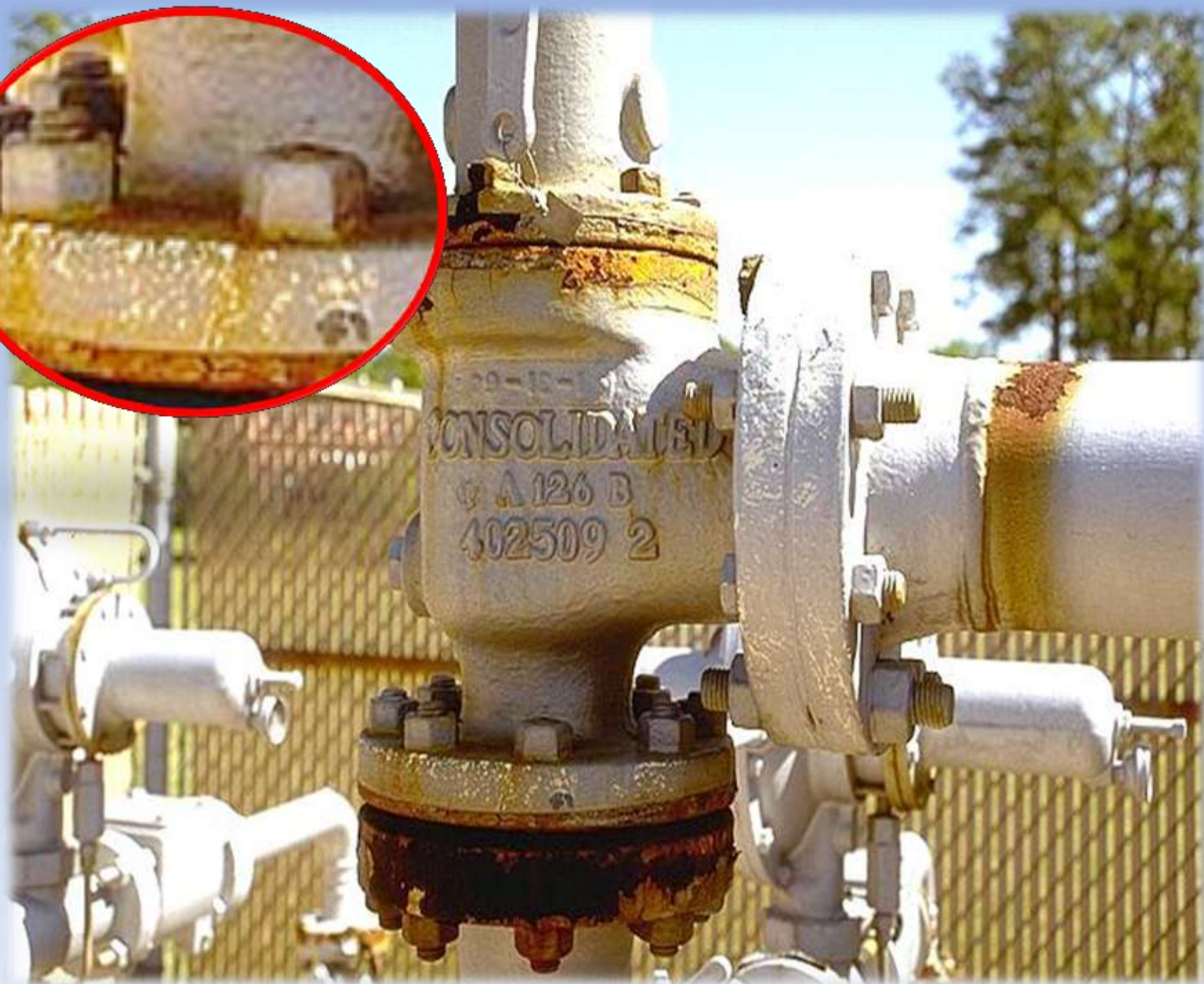














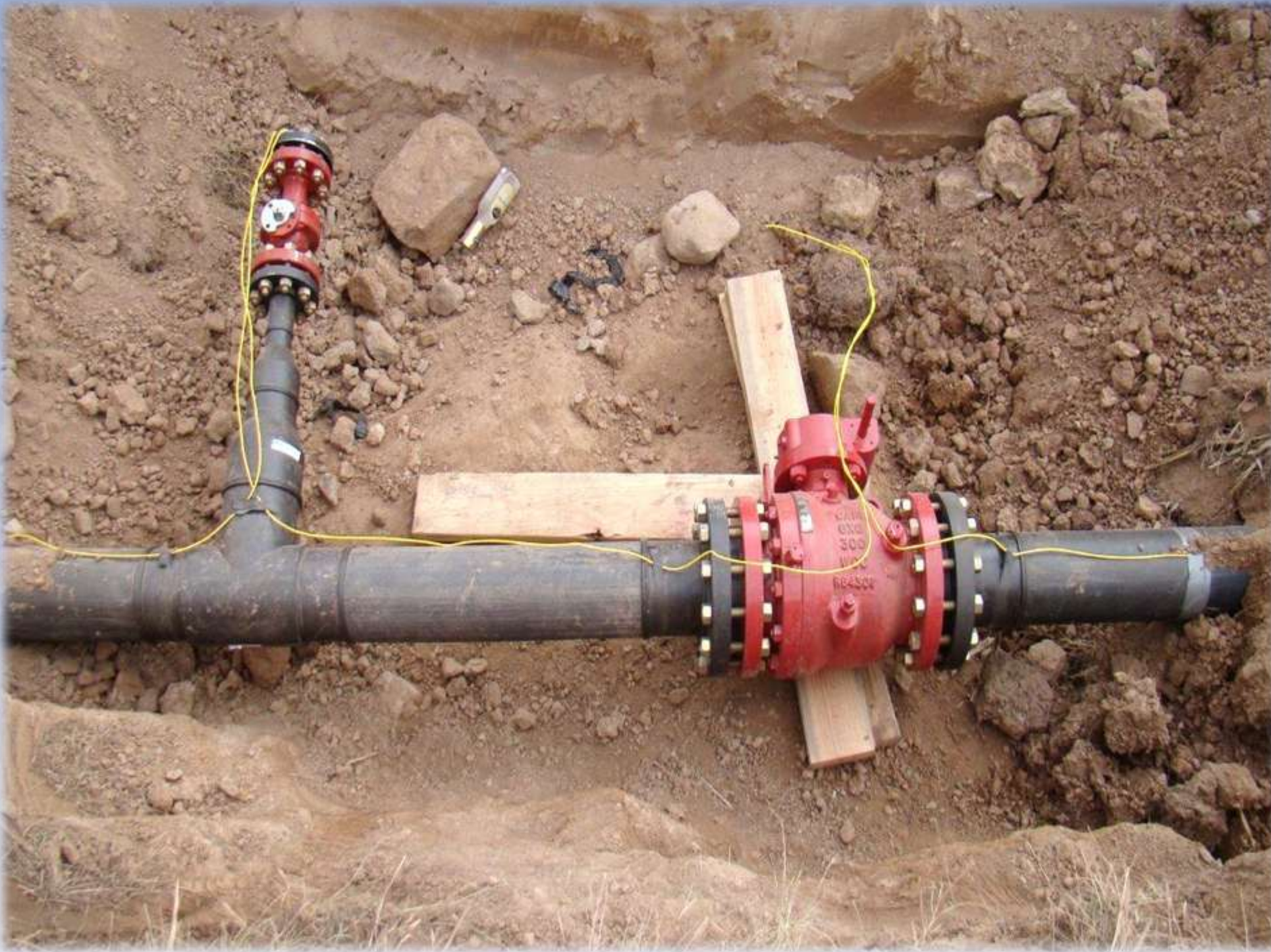








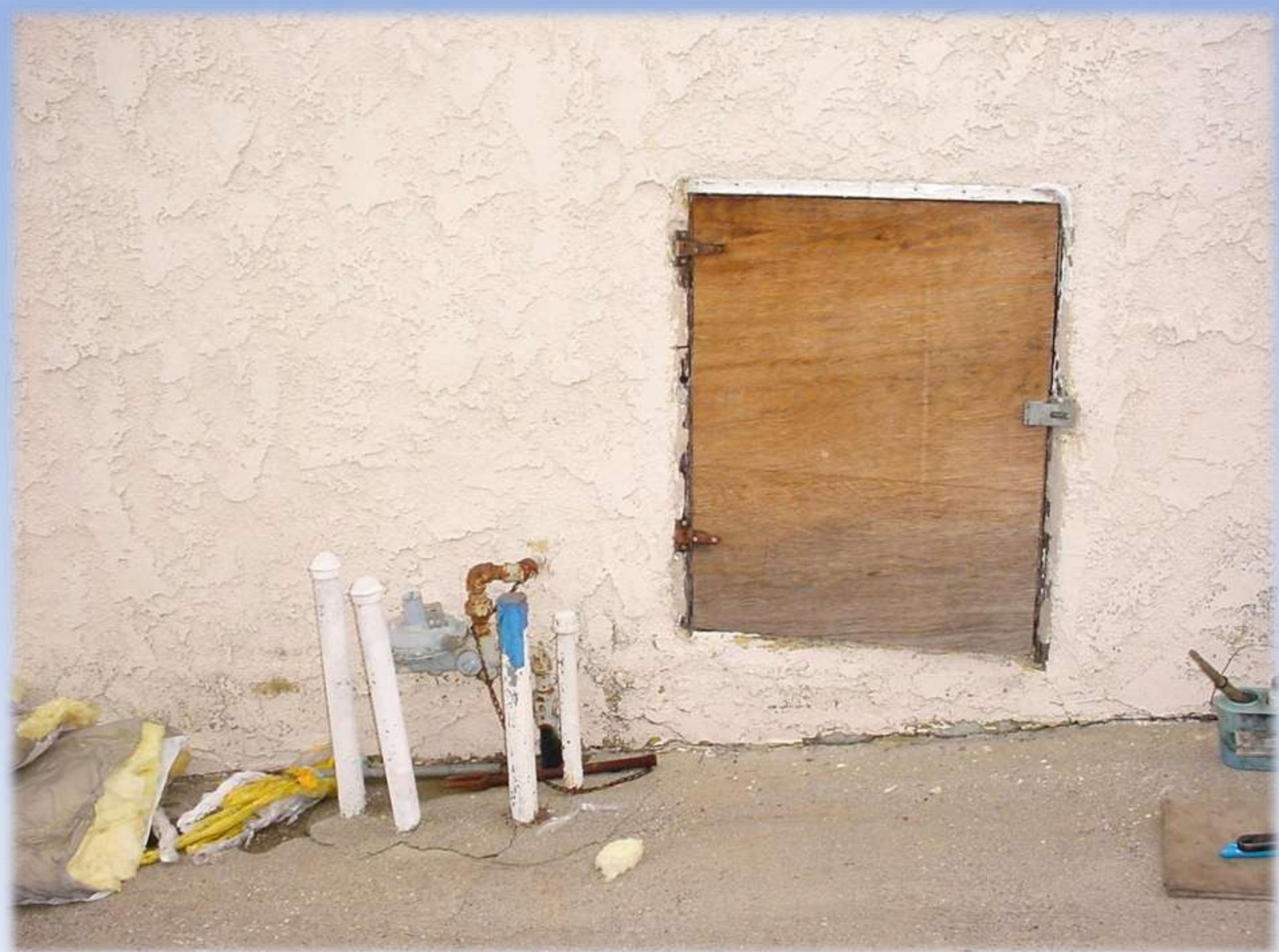




A photograph of a pipeline facility. In the foreground, a chain-link fence runs across the frame. Behind the fence, there are several large, horizontal pipes. Some of these pipes are painted red, while others are grey. There are also some vertical pipes and valves. The background is filled with green foliage and trees. A sign is attached to the fence, with a yellow header and a white body containing text.

Pipeline Company

For Emergencies Call:



A Wide Shot for Perspective (note the severely sloped driveway)







